

Contact Details

Contact Name:

Graham Bell BA, FRGS, DipTP, MRTPI, MSc

Address:

Bell Cornwell LLP
Oakview House
Station Road
Hook

RG27 9TP

Email:

gbell@bell-cornwell.co.uk

Website:

www.bell-cornwell.co.uk
(This will host a SurveyMonkey
online questionnaire)

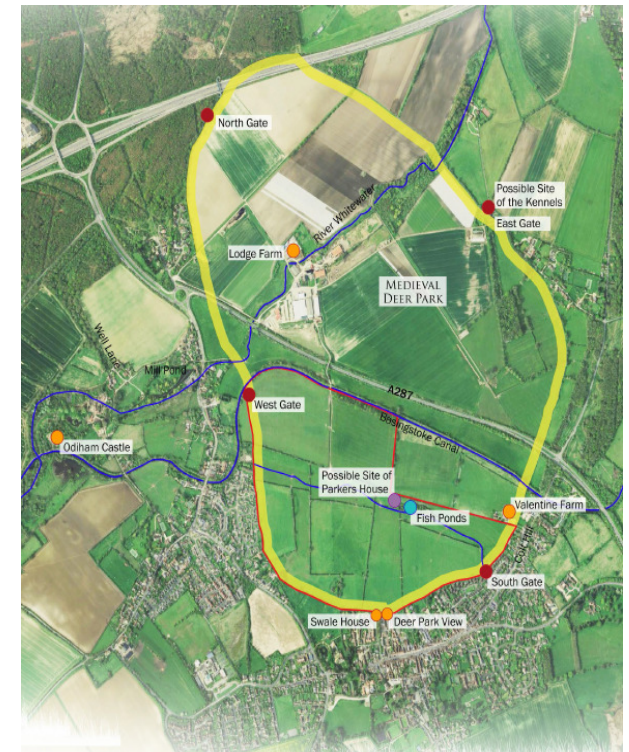
Your thoughts...

We would like your comments and ideas please and forms will be provided at the exhibition along with link to an online questionnaire to be set up after the end of the exhibition for a period of about 2 weeks.

With this information we hope you might be able to help us by considering questions such as:

- What do you think generally?
- What else could be done?
- What does the community need?
- Will this help local businesses?
- Does this create useable open spaces for local events?
- Is restoring the ponds, landscape and bringing back the deer a good idea?
- Is the enabling development in the right place?
- What about the public accesses?
- Other thoughts and local needs?

RESTORING THE HISTORIC DEER PARK AND FISH PONDS, AT ODIHAM



Introduction

An exhibition has been prepared to bring before the community the ideas of the landowner to restore the Deer Park on the edges of Odiham and North Warnborough.

In addition, the exhibition will explain the areas of the project where community uses and facilities can be introduced on the land to the benefit of both residents and businesses in Odiham.

The draft Master Plan will identify the areas for the deer, public open spaces, new footpath/cycle ways and new community facilities. The Plan will also identify where some development which will fund the whole multi £m. project, is proposed.



Images of Deer Parks

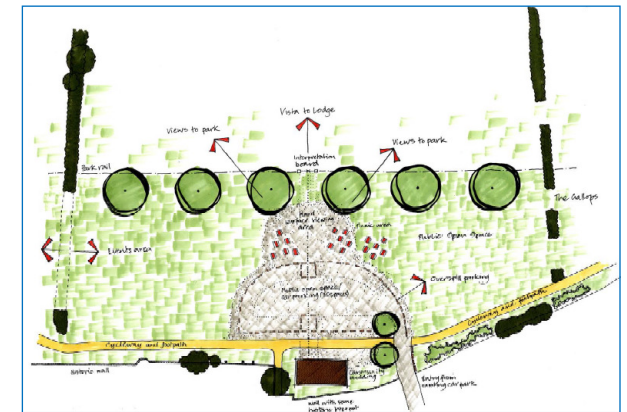
The Project

The owner's vision is to have deer roaming on the edges of Odiham and restore the historic landscape that supported the deer herd and the fish ponds.



The draft Landscape Master Plan

Community Hub



The community hub is proposed just off the car park near the doctors' surgery; it could provide more parking and an events field and community space or building.

Further Information on the Exhibition

Where?:
The Vine Church
London Road,
Odiham

When?:
Friday 24th April
1pm—8pm
Saturday 25th April
10am –2pm